

VENDITUM

RESIDENTIAL SALES

EST. 2004



133 Downton Road

Salisbury, SP2 8AT

£395,000



This attractive Edwardian semi-detached house has a number of individual features which elevate its appeal, but also offers huge amounts of scope to enhance and personalise. 133 Downton Road is located in the popular residential area of Harnham within catchment and walking distance of popular schools, district hospital, convenience store and open countryside – the city centre itself is within easy striking distance. The property itself is offered for sale in good basic order throughout but offers huge amounts of scope (subject to consent). The generous accommodation comprises entrance porch, hallway, sitting room, open plan kitchen/dining room, utility room, four bedrooms, bathroom and cloakroom. 133 Downton Road also has a particularly generous garage and attractive and well enclosed garden. This is a rare opportunity to acquire a quality character property, therefore an early internal viewing is essential.



Directions

Proceed to the A338 Downton Road where number 133 can be found on the left hand side on the junction of Milton Road.

Double Glazed Front Door to:

Entrance Porch

Quarry tiled floor. Front door to:

Entrance Hall

Stairs to first floor with open area under. Radiator.

Sitting Room 15'1" x 12'5" max (4.6m x 3.8m max)

Double glazed bay window to front aspect. Period fire surround with living flame gas fire. Radiator. Stripped floorboards.

Kitchen/Dining Room 18'4" max x 12'2" (5.6m max x 3.72m)

Sociable open plan space. Dining area with twin double glazed windows to the rear garden. Radiator. Fitted log burner with tiled hearth. Kitchen area with oak wall and base units with work surface over. Gas hob with oven under. Inset sink unit with mixer tap. Tiled splashbacks. Twin obscure glazed windows. Door to:

Rear Porch/Utility 7'0" x 5'1" ext to 8'10" (2.15m x 1.55m ext to 2.7m)

Belfast sink with work surface either side. Plumbing and space for washing machine. Tiled splashbacks and floor. Double glazed door to rear garden. Recess for coats/shoes.

Cloakroom

Low level WC. Tiled floor.

First Floor Landing

Stairs to second floor.

Bedroom One 11'10" x 10'5" (3.61m x 3.2m)

Double glazed window to rear aspect with far reaching views. Pedestal basin with tiled splashbacks. Cast iron fireplace with full height wardrobe cupboards either side, one housing Viesman gas boiler. Double radiator.

Bedroom Two 10'2" x 12'1" (3.11m x 3.7m)

Twin double glazed windows to front aspect. Double radiator. Twin built in wardrobe cupboards.

Bedroom Four 8'0" x 7'2" (2.45m x 2.2m)

Double glazed window to the front aspect. Radiator.

Bathroom 6'11" x 5'8" (2.12m x 1.75m)

White suite comprising WC, pedestal basin and panelled bath with mixer/shower attachment. Tiled splashbacks. Obscure double glazed window. Radiator.

Second Floor

Landing Area with Door to:

Bedroom Three 14'11" x 12'10" (4.55m x 3.92m)

Double glazed picture window to rear with impressive far reaching views toward Salisbury Cathedral. Radiator. Low level eaves storage cupboards. Recess for wardrobe.

En-suite Cloakroom – Low level Wc and wash hand basin. Obscure double glazed window to rear aspect.

Outside

The front garden is well enclosed by mature hedgerow with a gate from Downton Road leading to the front door. Gravelled area for low maintenance.

The rear garden is laid out over two main levels. Immediately outside the back door is a paved patio area with a gate to the side and steps down to a level area of lawn with a good array of mature planting and hedgerow. Stepping stone path to further patio area with door to the garage. Outside tap and light.

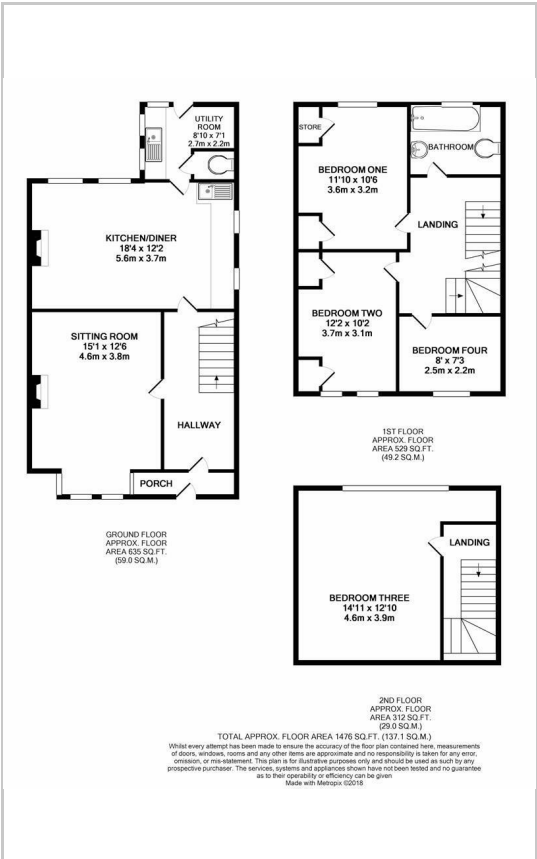
Garage 15'3" x 11'4" (4.65m x 3.46m)

The garage is currently divided into two sections, an electric roller door leads to a front section (3.5m ext to 5.3m x 2.15m) with power and light. A partition wall creates a separate rear section (3.5m x 2.4m) with power, light and pedestrian door to the rear garden.

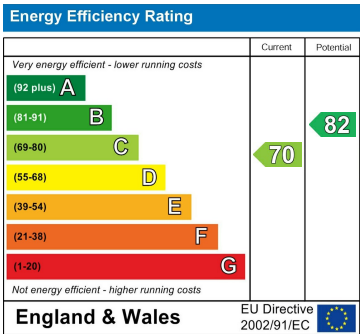
Area Map



Floor Plans



Energy Efficiency Graph



These particulars, whilst believed to be accurate are set out as a general outline only for guidance and do not constitute any part of an offer or contract. Intending purchasers should not rely on them as statements of representation of fact, but must satisfy themselves by inspection or otherwise as to their accuracy. No person in this firms employment has the authority to make or give any representation or warranty in respect of the property.